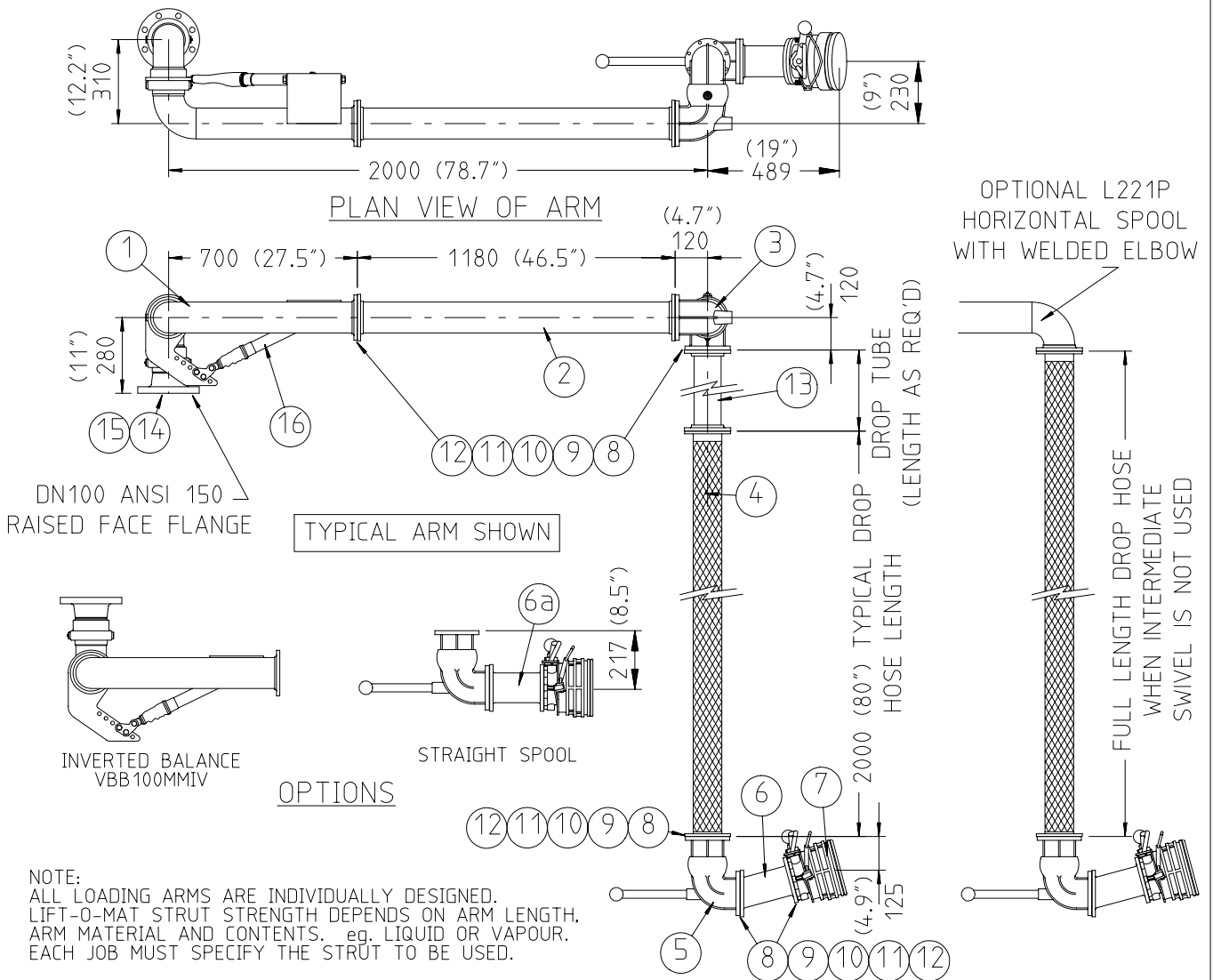


LIQUIP

MK3 BOTTOM LOADING ARM

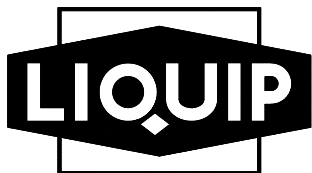


ITEM	PART NO	DESCRIPTION	QTY	MATERIAL	GRADE
1	VBB100MMV	BALANCE ASSEMBLY MK3 BOTTOM LOAD (RIGHT HAND)	1	STEEL	A633E
2	L219A	HORIZONTAL TUBE 101mm OD WITH TTMA FLANGES	1	ALUMINIUM	6061-T6
3	VNI-A4	INTERMEDIATE SWIVEL (OPTION)	1	ALUMINIUM	AA601
4	5639P	DROP HOSE CONVOLUTED WITH S/S BRAID 2m LONG	1	ST STEEL	304
5	VNC-A4	COUPLER SWIVEL ASSEMBLY	1	ALUMINIUM	AA601
6	VSA4	COUPLER SPOOL - ANGLED 15°	OPTION	ALUMINIUM	AA601
6a	VSS4	COUPLER SPOOL - STRAIGHT	OPTION	ALUMINIUM	AA601
7	API710	DRY BREAK COUPLER	1	ALUMINIUM	AA601
8	4248	GASKET	5	KLINGERITE	
9	6745	BOLT	40	Z/P STEEL	CLASS 8.8
10	6744	NUT	40	Z/P STEEL	CLASS 8
11	5261	WASHER SPRING	40	Z/P STEEL	MED
12	5288	WASHER FLAT	80	Z/P STEEL	MED
13	L220A	DROP TUBE	1	ALUMINIUM	6060
14	4235	GASKET	1	KLINGERITE	
15	4892	STUD B7 C/W 2 x NUT 2H	8	STEEL	B7 & 2H
16		LIFT-O-MAT STRUT (SEE NOTE ABOVE)	1	STEEL	
17	6359	MK3 INSTALLATION INSTRUCTIONS	1	PAPER	

X1250598

Issue: F

METERS - VALVES - VENTS - MANHOLES - PUMPS - HOSEREELS - OVERFILL PROTECTION - LOADING ARMS - ELECTRONIC DIPSTICKS



LIQUIP INTERNATIONAL PTY LTD

13 Hume Road
Smithfield, Sydney
NSW Australia 2164
Phone: +61 2 9725 9000
Fax: +61 2 9725 1252

DISTRIBUTORS

See inside front cover
for Liquip branches
and Distributors or visit

www.liquip.com